

Name: _____

Animal Cell Coloring

Cell Membrane (light brown)

Cytoplasm (white)

Nucleoplasm (pink)

Nuclear Membrane (dark brown)

Ribosome (red)

Nucleolus (black)

Golgi Apparatus (pink)

Cilia (yellow)

Rough Endoplasmic Reticulum (dark blue)

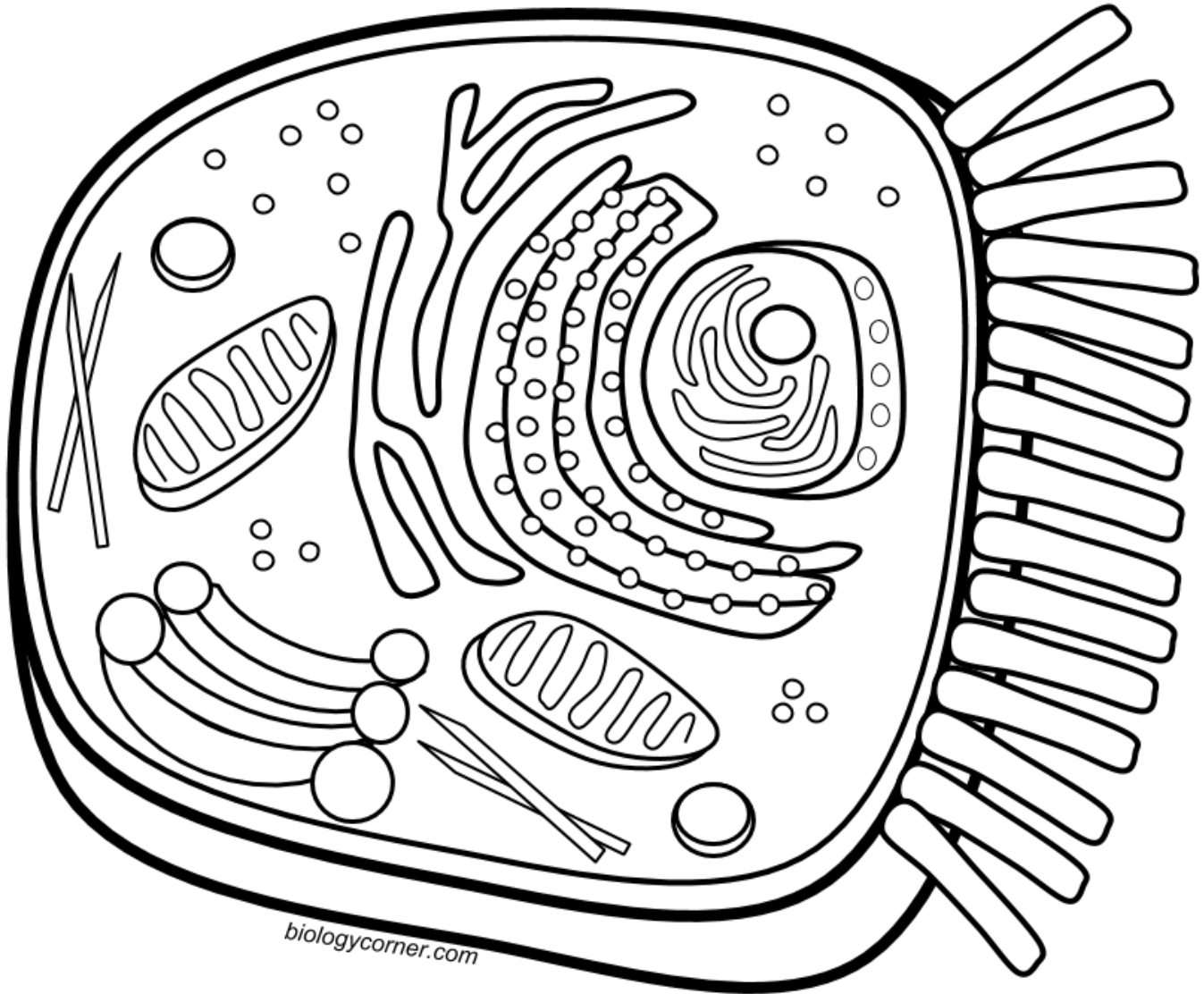
Smooth Endoplasmic Reticulum (light blue)

Mitochondria (orange)

Lysosome (purple)

Microtubules (green)

Chromosomes (dark green)



biologycorner.com

Briefly describe the function of the cell parts.

1. Cell membrane _____
2. Endoplasmic Reticulum _____
3. Ribosome _____
4. Golgi Apparatus _____
5. Lysosome _____
6. Microtubule _____
7. Mitochondria _____
8. Nucleus _____